

3/2 AIR PILOT/SPRING VALVE  
PORT SIZES 1/4, 3/8, 1/2, 3/4  
SERIES VSA3000

- ✓ High flow cv 1:1-4.5
- ✓ Life in excess of 20 million cycles
- ✓ Stainless steel spool and sleeve design



SYMBOLS



How To ORDER

SERIES VSA3000



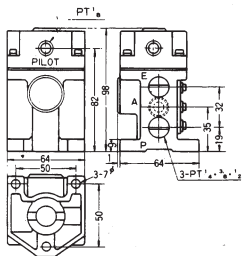
BODY SIZE

- 15 ...Class 1 body ported Cv 1.1
- 35 ...Class 3 body ported Cv 2.58
- 45 ...Class 4 body ported Cv 4.5

PORTING

- 02 ...Class 1 1/4"
- 03 ...Class 3 3/8"
- 04 ...Class 3 1/2"
- 06 ...Class 4 3/4"

DIMENSIONS VSA3135

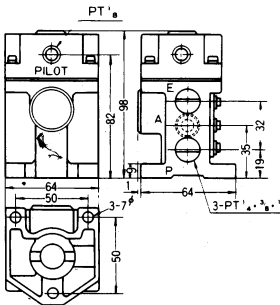


TECHNICAL SPECIFICATIONS

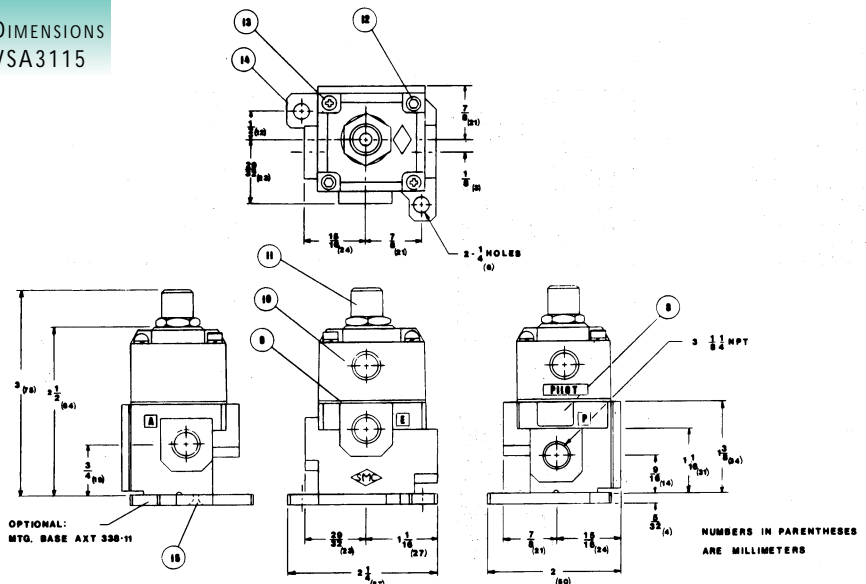
Model no.	Port size	Flow CV	Max. operating temperature	Operation pressure
VSA3115	1/4"	1.1	60°C	Vacuum to 9.9 Bar
VSA3135	3/8"	2.58	60°C	Vacuum to 9.9 Bar
	1/2"	2.58		
VSA3145	3/4"	4.5	60°C	Vacuum to 9.9 Bar

**STOCKED PRODUCTS**  
FOR A LIST OF STOCKED PRODUCTS, PLEASE SEE THE CURRENT SMC PRICE LIST

DIMENSIONS VSA3145



DIMENSIONS VSA3115



SEE INSIDE FRONT COVER FOR DETAILS OF YOUR LOCAL SALES OFFICE



FOR FURTHER TECHNICAL DETAILS ON THIS PRODUCT CONTACT YOUR LOCAL REGIONAL CENTRE